

Smart electricity meter

INSTRUCTIONS

Aidon 6550



Savon Voima Verkko

Aidon 6550

Instructions for using the smart electricity meter

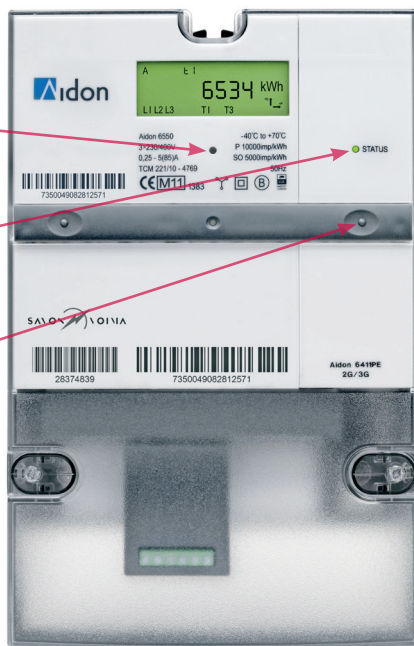
Your electricity consumption in this building is measured remotely with a smart meter made by Aidon. Savon Voima Verkko obtains your electricity consumption data in kilowatt hours for billing purposes by reading your smart meter remotely once a day automatically via a data transfer connection. This means you no longer need to submit meter readings.

Indicator lights and buttons on the meter

Flashing light indicating electricity consumption

Metering device's status indicator light

Pressing the display scroll button speeds up the readings, date and time and transformation ratio that appear on the display.



Keep track of your electricity consumption and save energy!

Interpreting the meter's display

The kilowatt hour remote-meter readings allow you to monitor your electricity consumption. You can find all of the readings used for your billing in the kilowatt hour meter's display.

The meter readings change on the screen approximately every 20 seconds. The readings are displayed without a zero in front and as whole numbers. The reading(s) have been multiplied by the transformation ratio.

Data displayed

- Time (hour:minute:second)
The time is always the 'normal time', and does not switch to daylight savings time.
- Date (day:month:year)



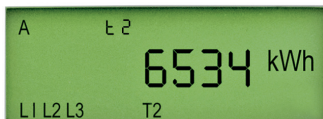
t1

general electricity reading

off-peak electricity daytime reading/seasonal electricity

winter daytime reading

T1 = metering data logged in the T1 register



t2

off-peak electricity night reading/seasonal electricity

other time

reading off-peak electricity, at night/seasonal electricity

other time

T2 = metering data logged in the T2 register

Information on the situation at the time of the transfer to remote meter reading

Reading on the electricity meter taken out of service:

1. _____ 2. _____

Remote meter installation date: _____

Remote meter installed by: _____

Contact us for more information!

Data concerning the remote-meter kilowatt hours is always based on the electricity product you purchase from Savon Voima. You can see the product you have purchased in your most recent electricity bill or you can ask our customer service either by email at asiakaspalvelu@savonvoima.fi or by calling our service number at **017 224 400**.